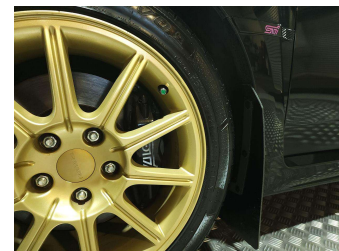
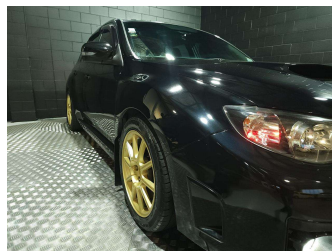
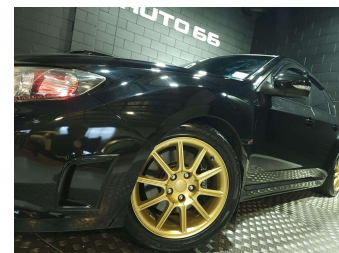
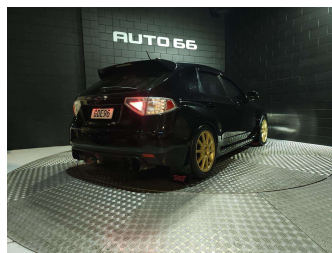


2011 Subaru Impreza WRX STI



Purchase Price **\$34,995**
Includes GST, Registration & Licensing

Indicative repayments
\$173.15 per week*
Based on a 48 month term & 20% deposit.
Total repayments (208) = **\$43,014.11**

FINANCE

Gain peace of mind with Mechanical Breakdown Insurance. **Ask us how.**

Top features
None Listed

Body Style
5 door, Hatchback

Odometer
123,400 km

Engine
2457 cc, Internal Combustion


Fuel Type
Petrol

Transmission
Manual, All Wheel Drive

Wheels
-

VIN
JF1GRFKH38G024077

Interior
Blue-Grey, Cloth & Suede

Safety

Based on 2023 UCSR rating for 07-11 models

Reg No.
GDE96

Ext Colour
Black

History
NZ New, 2 owners

Seats
5 seats

CO2 Emissions
★☆☆☆☆

Energy Economy
☆☆☆☆☆

Annual fuel cost not available

Energy Consumption unknown.

Stock ID: 10038



Auto 66 | Phone 07 847 6646 | Email sales@auto66.co.nz
40 Greenwood Street, Frankton, Hamilton 3204, New Zealand
www.auto66.co.nz

* Auto 66 is not a lender nor a financial adviser. Any amounts displayed should not be seen as an offer of finance or taken as financial advice. The interest rate, fees and loan term used in this calculation may not actually represent those available from lenders. Actual interest rates, fees and loan terms will vary per lender and are typically based on an assessment of your credit risk and responsible lending criteria. Any repayment amounts displayed are indicative only and have been calculated using several other indicative inputs. The interest rate used in this calculation is an arbitrary 11.95%, however exact interest rates vary per lender. The term of the loan used in this calculation is 48 month. Exact terms available vary per lender although options typically include 6, 12, 18, 24, 36, 48 and 60 months. This calculation also includes a typical mandatory fee charged by lenders. This is a one-off establishment fee of \$523.00. Typically, this fee can be paid upfront or, as in this calculation, be capitalised over the contract term, ie. included in the loan amount. This fee can vary per lender and other non-mandatory fees and charges may also apply. The total amount of repayments has been calculated by multiplying 208 weekly repayments (based on a 48 month term) by the weekly repayment amount of \$173.15 which equals \$43,014.11. This calculator does not consider any of your own personal circumstances and we strongly suggest you seek budgeting advice prior to committing to any loan contract. Responsible lending criteria and lender terms and conditions will likely apply to any finalised loan contract. Proof of security and/or vehicle insurance may also be required before proceeding.